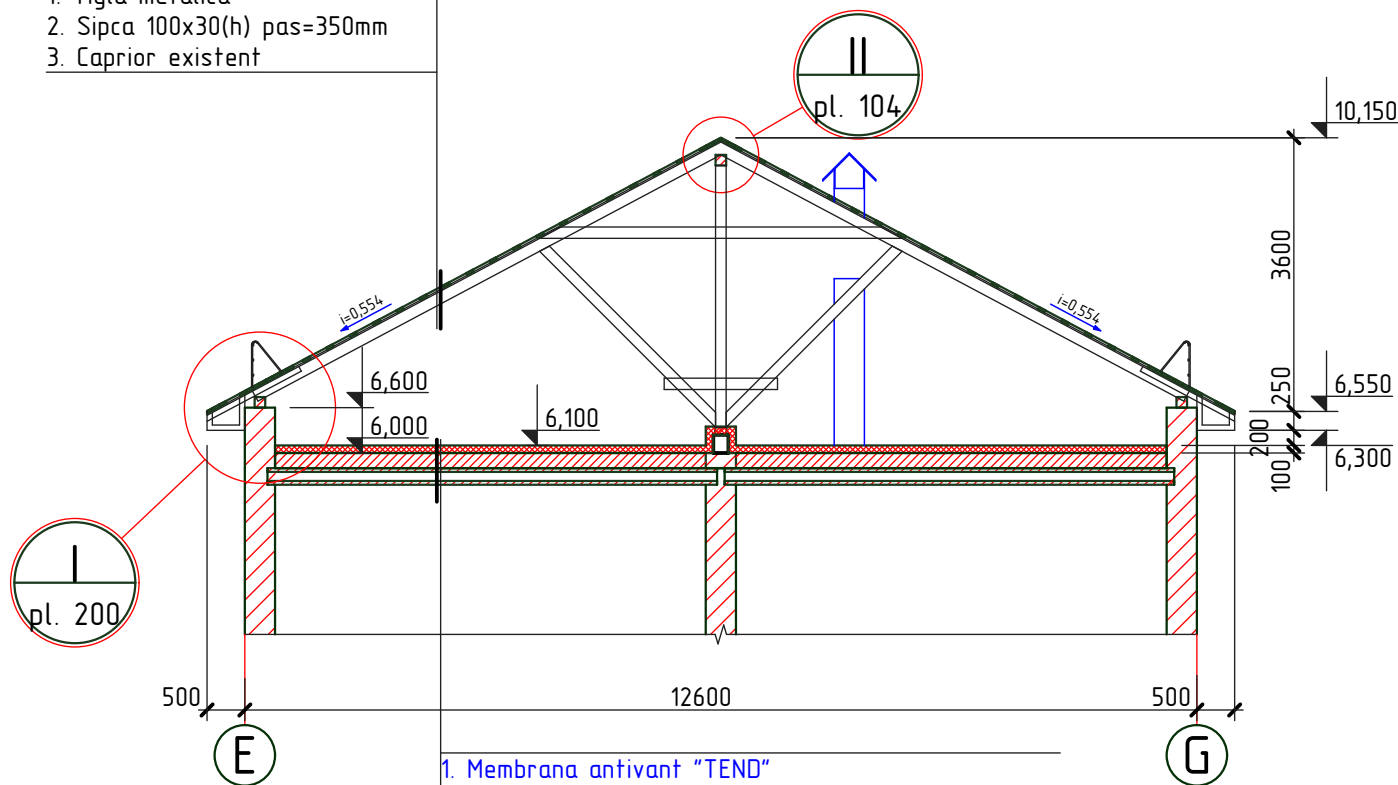


1. Tigla metalica
2. Sipca 100x30(h) pas=350mm
3. Caprior existent

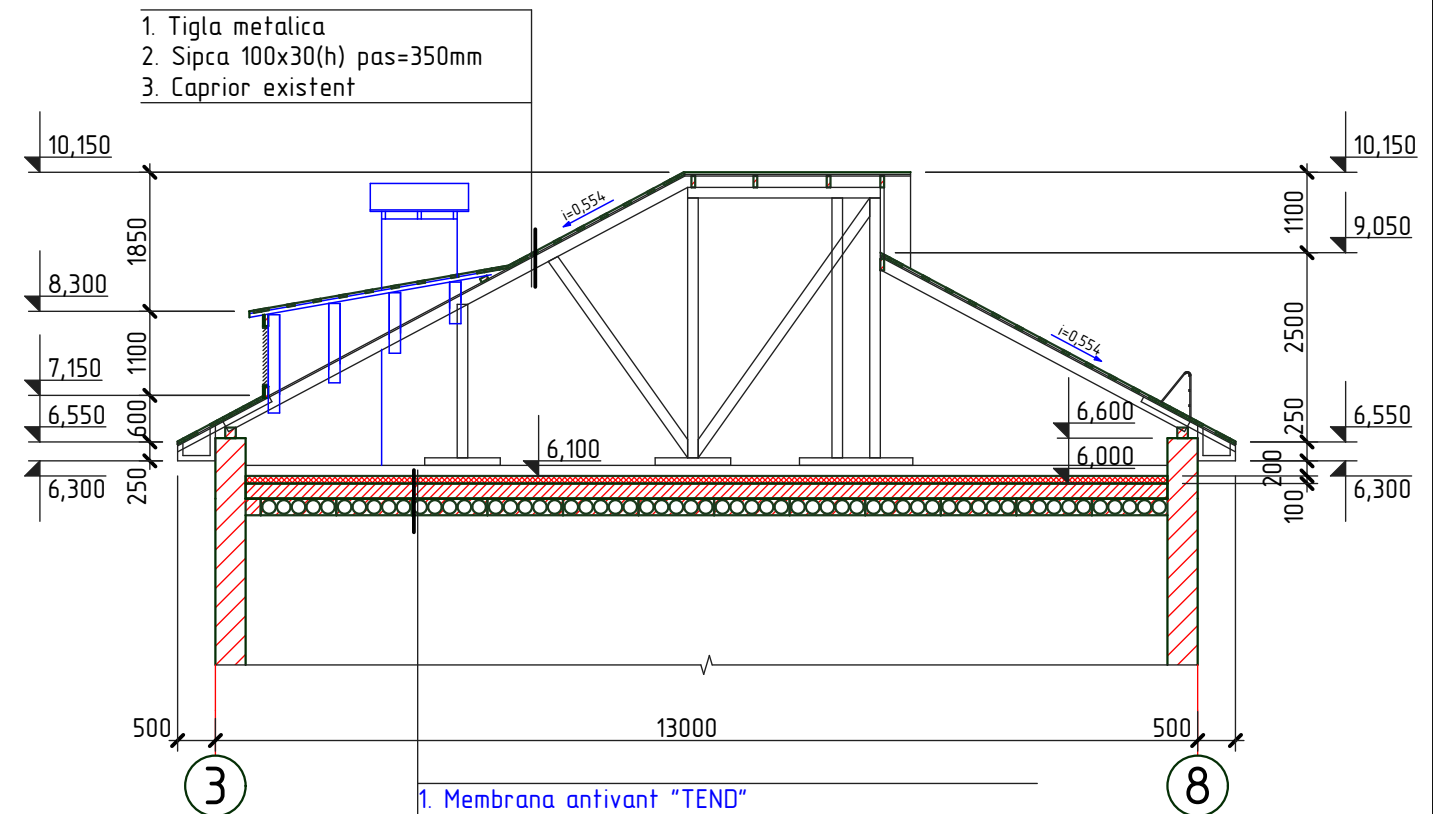


1. Membrana antivânt "TEND"
2. Termoizolant: vata minerala bazaltica, ignifuga $\gamma=125\text{ kg/m}^3$, $\lambda=0,037\text{ W/mk}$, $\delta=100\text{mm}$
3. Membrana contravapori "TEND"
4. Invelis existent de acoperis $\delta=250\text{mm}$
5. Planseu existent

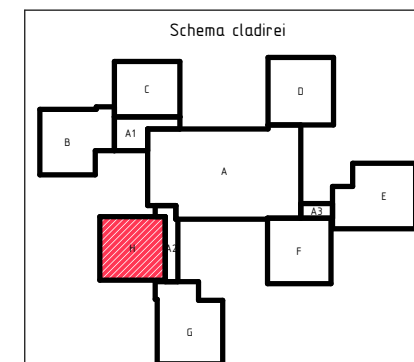
1. Specificatia materialelor vezi pl. 201.

Sectiunea A-A

sc. 1:100



1. Membrana antivânt "TEND"
2. Termoizolant: vata minerala bazaltica, ignifuga $\gamma=125\text{ kg/m}^3$, $\lambda=0,037\text{ W/mk}$, $\delta=100\text{mm}$
3. Membrana contravapori "TEND"
4. Invelis existent de acoperis $\delta=250\text{mm}$
5. Planseu existent



2020	28.07-D/20-SAC			Reparatia capitala a acoperisului scolii primare nr. 21 "S. Vangheli" din str. Tudor Vladimirescu 16		
A.S.P	Mihaila V.		07.20	Scoala primara Bloc H	faza	plansa
I.S.P	Hihlat Em.		07.20		PE	199
Elaborat	Mihaila V.		07.20	Sectiunea A-A si B-B		"GEO-CAD-PROIECT" mun. Balti